

## Safety Power's Stainless Steel Urea Fill Station (UF060)

### Description

Safety Power's Stainless Steel Urea Fill Station is ideal for sites that will have access to bulk urea (DEF) from transport trucks. The Cam Lock connector allows for easy clip and go operation, suitable for bulk tankers. Safety features such as a tank hi level alarm, isolation & check valves and lockable panel are also included. The Urea Fill Station is fully integratable with Safety Power's control system such that alarms can be displayed on the primary control panel (CP100) and Building Automation System (BAS) if desired.

### Features

- Stainless Steel 304 Construction
- Tank hi level alarm display
- Fully integrated with Safety Power's control panel & display
- Cam Lock connector suitable for bulk tankers
- OSHA compliant operating instruction lamacoids
- Integrated spill containment
- Lockable panel
- Isolation valve
- Check valve



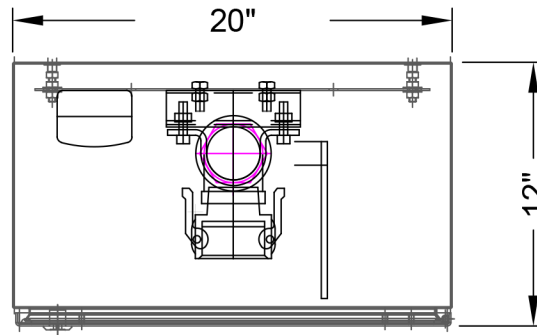
ISO 9001 REGISTERED

[www.safetypower.ca](http://www.safetypower.ca)

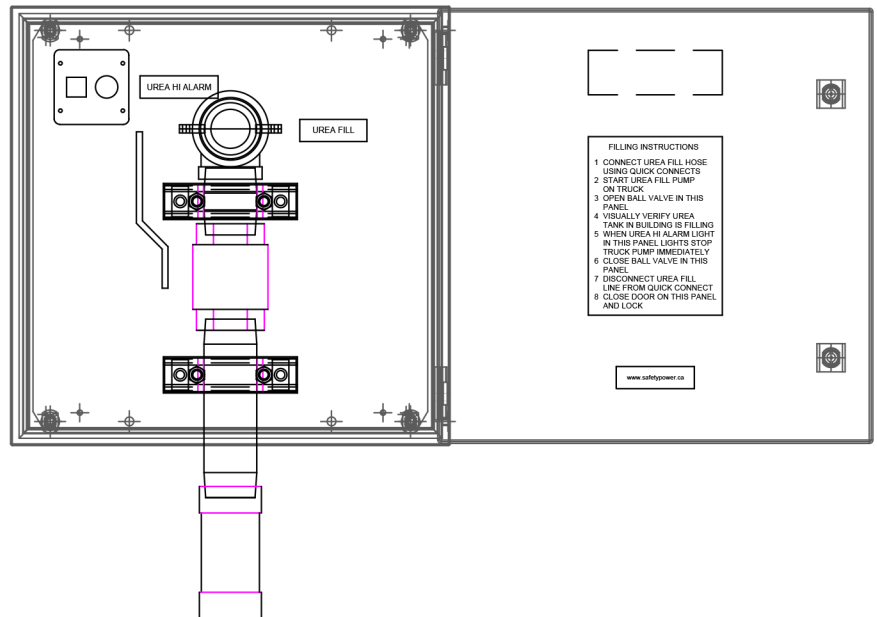
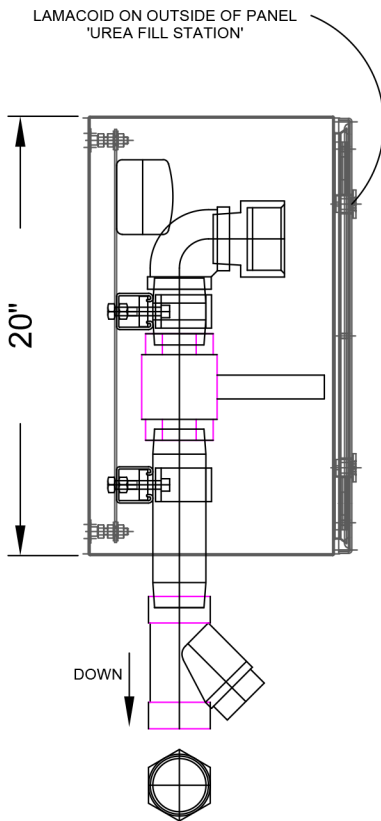
[www.safetypowerinc.com](http://www.safetypowerinc.com) / 1-800-657-1280 / [info@safetypowerinc.com](mailto:info@safetypowerinc.com)

## Safety Power's Stainless Steel Urea Fill Station (UF060)

### DIMENSIONS



UF060 ( UREA FILL STATION )



### About Us

Safety Power is the global innovator in emissions control for large scale diesel and natural gas engines. The company manufactures the ecoCUBE® SCR, ecoTUBE™ SCR, FOx® and Ox™ range of product that reduce NOx, CO, VOC and PM emissions on engines from 500kW up to 20MW and beyond.

Safety Power also has extensive experience with the associated urea storage & transfer system accessories. This includes urea tanks, air compressors, urea transfer pump systems, fill stations and more.

For more information about our emissions control systems & accessories please contact [info@safetypower.ca](mailto:info@safetypower.ca)